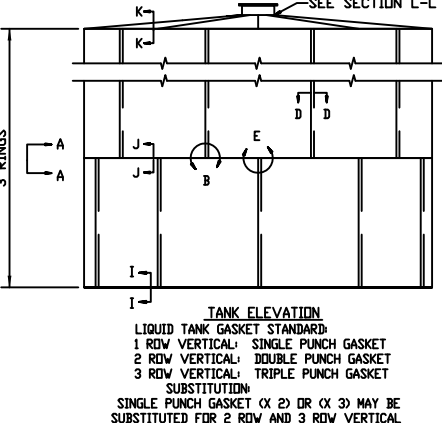
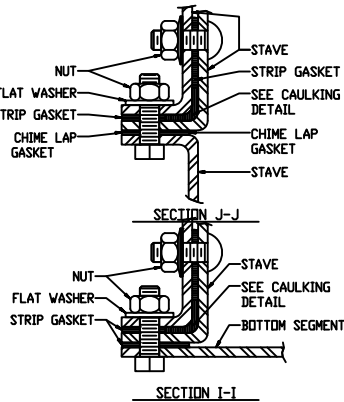
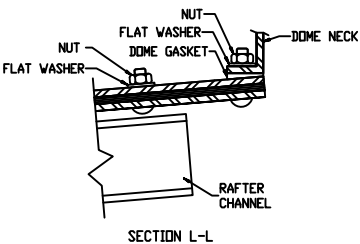
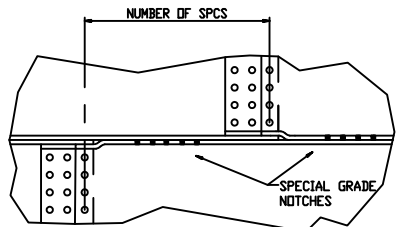
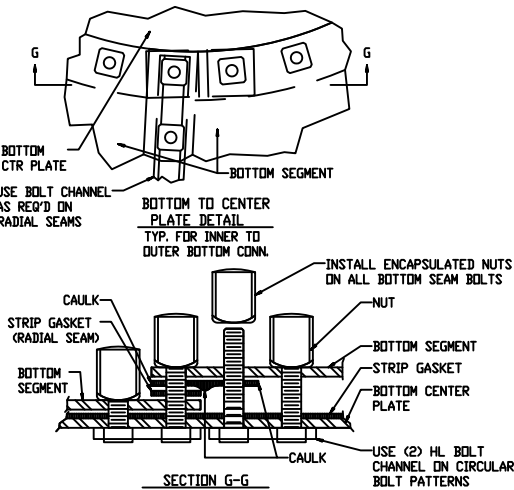
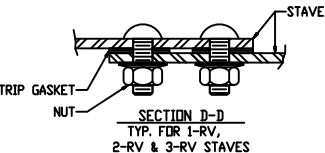
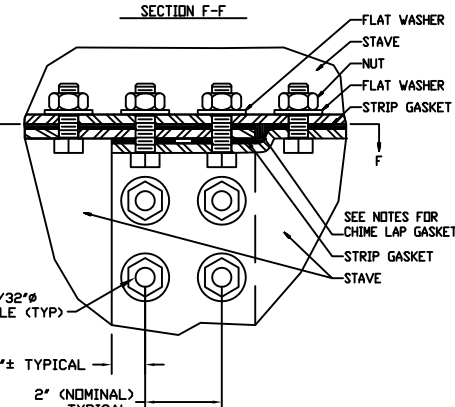
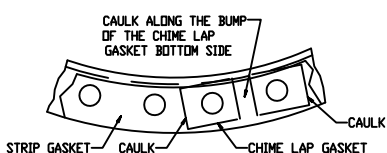


RING 2: 10 GA 2RV		
LOCATION	DESCRIPTION	QTY
VERTICAL SEAM BOLTS	1/2 X 1 1/4 FN PC HD HDG	3072
VERTICAL SEAM NUTS	1/2 HEX NUT	3072
VERTICAL SEAM WASHERS	1/2 NEOP BKD STEEL GALV	3072
VERT SEAM STRIP GASKET	STRP GSKT - 2 HDLE BUNA	279
CHIME BOLTS	1/2 X 1 1/4 SQ HD HDG GR5	768
CHIME LAP BOLTS	1/2 X 1 1/4 SQ HD HDG GR5	128
CHIME WASHER	1/2 FLAT STEEL GALV	896
CHIME NUTS	1/2 HEX NUT	896
CHIME STRIP GASKET	STRP GSKT - 1 HDLE BUNA	154
CHIME LAP GASKET	GSKT CH/LAP LT BUNA	64
RADIUS GASKET	GSKT THN RAD BUNA 2RV	64

DECK, 12 GA		
LOCATION	DESCRIPTION	QTY
CENTER DOME BOLTS	1/2 X 1 1/4 FN PC HD HDG	28
CENTER DOME LAP BOLTS	1/2 X 1 1/4 FN PC HD HDG	2
CENTER DOME WASHERS	1/2 FLAT STEEL GALV	30
CENTER DOME NUTS	1/2 HEX NUT	30
CENTER DOME GSKT	MANHOLE GASKET 30 HL	1
DECK COVER PL BOLTS	1/2 X 1 1/4 FN PC HD HDG	62
DECK COVER PL WASHERS	1/2 FLAT STEEL GALV	62
DECK COVER PL NUTS	1/2 HEX NUT	62
DECK COVER PL GSKT	STRP GSKT - 1 HOLE BUNA	16
RADIAL SEAM BOLTS	1/2 X 1 1/4 FN PC HD HDG	4032
RADIAL SEAM WASHERS	1/2 FLAT STEEL GALV	4032
RADIAL SEAM NUTS	1/2 HEX NUT	4032
RADIAL SEAM STRIP GSKT	STRP GSKT - 1 HOLE BUNA	693
OUTER/INNER SEAM BOLTS	1/2 X 1 1/4 FN PC HD HDG	448
OUTER/INNER SEAM WASHERS	1/2 FLAT STEEL GALV	448
OUTER/INNER SEAM NUTS	1/2 HEX NUT	448
OUTER/INNER SEAM GSKT	STRP GSKT - 1 HOLE BUNA	87
TOTAL LAP GSKT	GSKT CH/LAP LT BUNA	130
DECK LAP BOLTS	1/2 X 1 1/4 FN PC HD HDG	98
DECK LAP WASHERS	1/2 FLAT STEEL GALV	98
DECK LAP NUTS	1/2 HEX NUT	98

HARDWARE LIST FOR TANK - INTERNATIONAL OVERAGE					
ITEM	D/S	PART NO.	QTY	DESCRIPTION	PAINT
1	-	775G00810	906	BOLT - 1/2 X 1 LG SQUARE HEAD HDG GR5	N
2	-	775G00812	7769	BOLT - 1/2 X 1 1/4 LG SQUARE HEAD HDG GR5	N
3	-	775G00814	290	BOLT - 1/2 X 1 1/2 LG SQUARE HEAD HDG GR5	N
4	-	777GR0812	14908	BOLT - 1/2 X 1 1/4 LG FIN POLYCAP HDG	N
5	-	50-27-0304-01	475	BLT HH 1/2"X 1-1/4" SS/304	N
6	-	50-27-0304-02	44	BLT HH 1/2"X 1-1/2" SS/304	N
7	-	50-27-0304-04	18	BLT HH 1/2"X 2" SS/304	N
8	-	782G00800	18743	NUT - 1/2 HEX GALVANIZED	N
9	-	784NE0800	5030	NUT - 1/2 ENCAPSULATED	N
10	-	50-27-0304-07	537	NUT - 1/2 304SS HEX WAXED	N
11	-	791M04125	8832	WASHER - 1/2 FLAT STEEL GALVANIZED	N
12	-	790Z04000	9861	WASHER - 1/2 NEOPRENE BACKED GALVANIZED STEEL	N
13	-	791MR4000	54	WASHER - 1/2 RECESSED GALVANIZED STEEL	N
14	-	795NR4000	54	WASHER - 1/2 NEOPRENE O RING	N
15	-	50-27-0304-08	522	WASHER - FLAT 1/2 304SS	N
16	-	751C00002	2361	STRIP GASKET - 1 HOLE BUNA	N
17	-	751C00003	897	STRIP GASKET - 2 HOLE BUNA	N
18	-	752C00032	205	GASKET THIN RADIUS BUNA NITRILE 2RV	N
19	-	753Z00002CFS	516	GASKET - CHIME LAP MED BUMP BUNA	N
20	-	375G14003	16	2 HL BOLT CHANNEL GALVANIZED	N
21	-	375G14005	34	3 HL BOLT CHANNEL GALVANIZED	N
22	-	375G14015	2	8 HL BOLT CHANNEL GALVANIZED	N
23	-	375G14027	34	14 HL BOLT CHANNEL GALVANIZED	N
24	-	375G14061	34	31 HL BOLT CHANNEL GALVANIZED	N
25	-	375G14095	68	48 HL BOLT CHANNEL GALVANIZED	N
26	-	754C00030	2	MANHOLE GASKET 30 HL BUNA	N
27	-	756Z00000	18	TREMPRO 626 WHITE CAULK	N



# GENERAL ARRANGEMENT DRAWING